



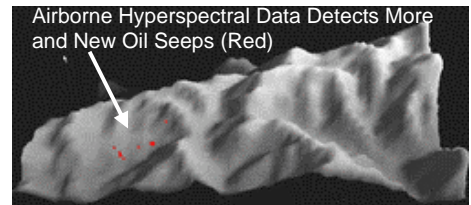
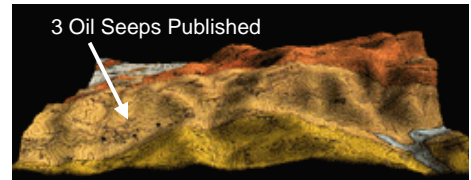
Imaging & Mapping Solutions

SERVICES

Images
Maps
Interpretations
Visualization

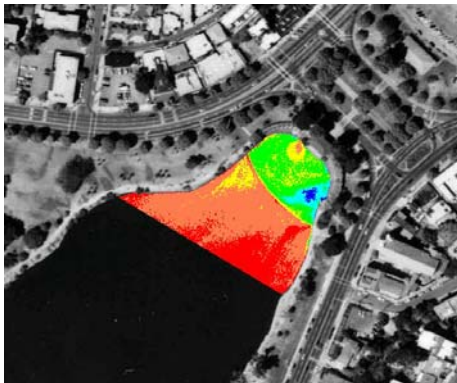
APPLICATIONS

Environmental
Engineering
Geologic



A remote sensing and GIS company founded in 2002 by James Ellis, Ph.D., providing timely products and reports for industry and government. Specializing in **environmental baselines** using satellite and airborne multispectral, hyperspectral, and film imagery in Africa, South America, Asia, and U.S.A. Vegetation, geology, soils, vegetation stress, and land cover maps being derived from a broad base of imagery. Integrating derived maps with DEM's, GPS, orthophotography, and client databases. Delivering enhanced imagery and derived maps as ready-to-use GIS files with attributes and metadata.

Clients include Chevron, Tetra Tech, Groundwater Services Inc., Geomatrix, Economic and Planning Systems, Battelle, Tengizchevroil (Kazakhstan), Clean Lakes, Inc. Aquatic Nuisance Plant Control, Mactec.



Thermal Map of Lake Merritt, Oakland

Insured

\$1,000,000 General Liability
\$1,000,000 Automobile Liability
\$250,000 Professional Liability

Certified Veteran-Owned Small Business (Vietnam Era)

Certified Small Business in the State of California (OSBCR # 29164)

Registered with Government Vendor Databases

DoD, NASA, & DoT's Central Contractor Registration (CCR), SBA's Pro-Net

State of California

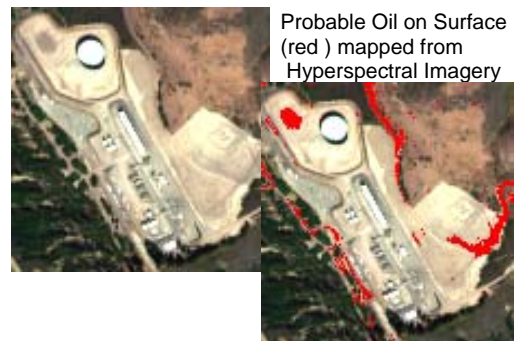
Professional Geologist

Certificate No. 7391

Diablo Valley College Instructor

Remote Sensing and Maps & Cartography

Twenty-five publications in industry journals
and conference proceedings



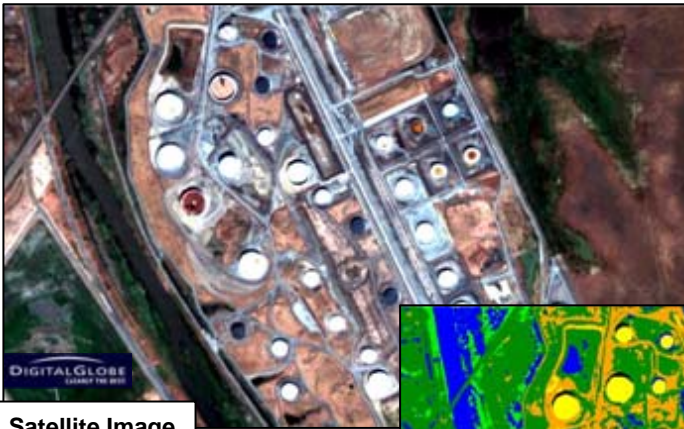
Delivering enhanced imagery, informative maps, FGDC-compliant metadata, ready-to-load GIS solutions, and reports

1839 Ygnacio Valley Rd, #229
Walnut Creek, CA 94598

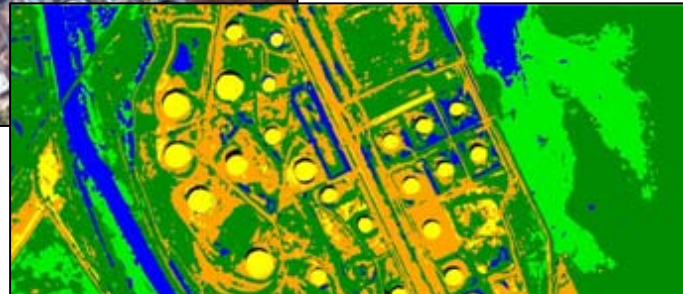
www.ellis-geospatial.com

tele/fax: 925-280-0720
jellis@ellis-geospatial.com

Providing NEW Content to GIS through Remote Sensing



Satellite Image

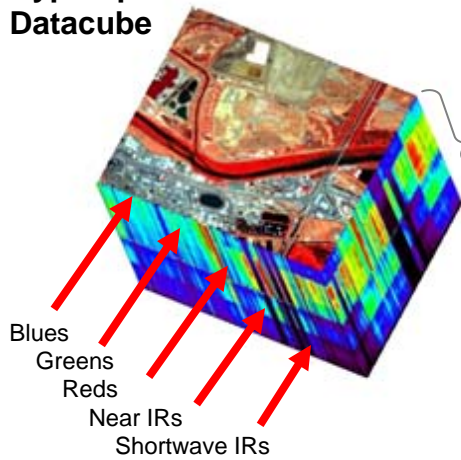


Land Use/Land Cover Map

Refinery_classification.shp	unclassified
	vigorous veg/wetlands
	vegetated areas/less vigor
	open, disturbed, little veg
	manmade, road surfaces, barren
	water/saturated soils

Classification Distribution		
File		
File: 5_class3 [427,520 points]		
Class Name	Npts	Pct
Unclassified	[2568]	0.601%
vigorous vegeta	[64623]	15.116%
vegetated areas	[210419]	49.219%
open, little ve	[94366]	22.073%
manmade, road s	[21175]	4.953%
water and satur	[34369]	8.039%

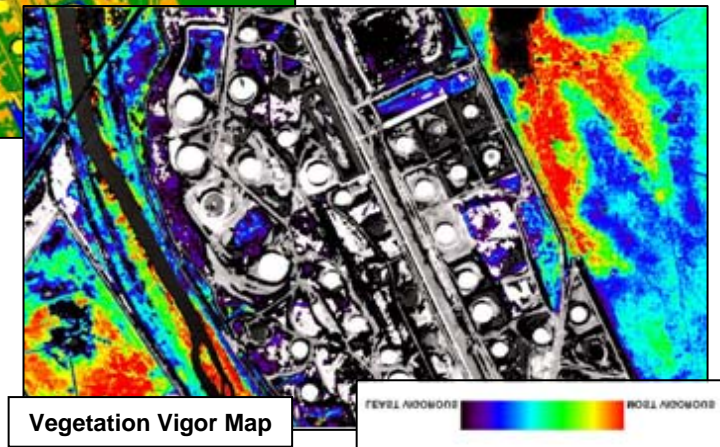
Hyperspectral Datacube



Stack of B&W images, each a narrow wavelength band - from reflected visible Blue to shortwave IR

~50 - 300 bands

Blues
Greens
Reds
Near IRs
Shortwave IRs

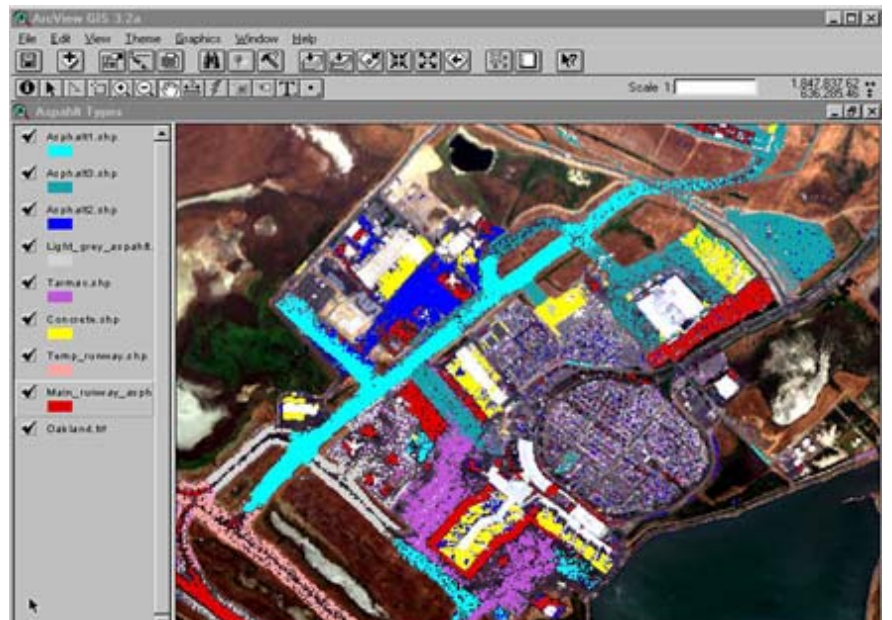
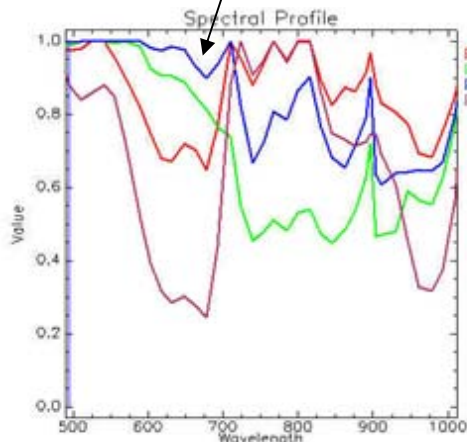


Vegetation Vigor Map

Deriving new GIS maps from high resolution multispectral and hyperspectral imagery. Building environmental baselines for vegetation, industrial sites, soils, & landcover with FGDC-compliant metadata



Hyperspectral Signatures of ponds "b" and "c" may prioritize field work and remediation program



Hyperspectral Map of airport paved surfaces - different composition/condition revealed